

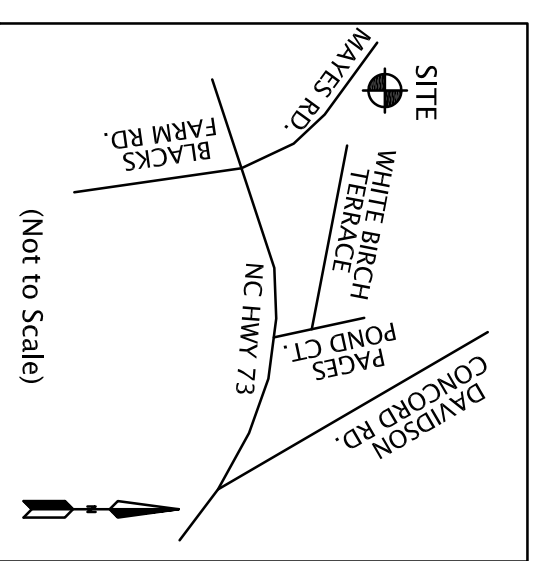
SITE DEVELOPMENT DATA

JURISDICTION: TOWN OF DAVIDSON, MECK. CO.
 ZONING: RURAL PLANNING AREA
 TAX ID#: 00716209
 PROPOSED USE: RESIDENTIAL
 TOTAL SITE: 61.99 ACRES + 3.545 ACRES Decided to the Woodlands at Davidson Development Company (Planned with Phase II of the Woodlands) = 65.535 ACRES
 PROPOSED DEVELOPMENT: TYPE 1 LOTS 48 lots
 TYPE 2 LOTS narrow lot / multi-family lot 11 lots

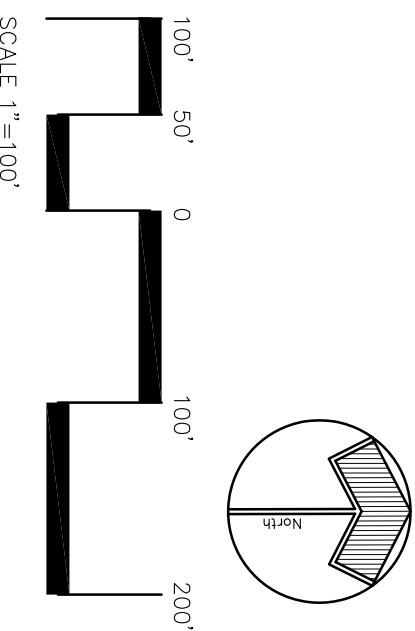
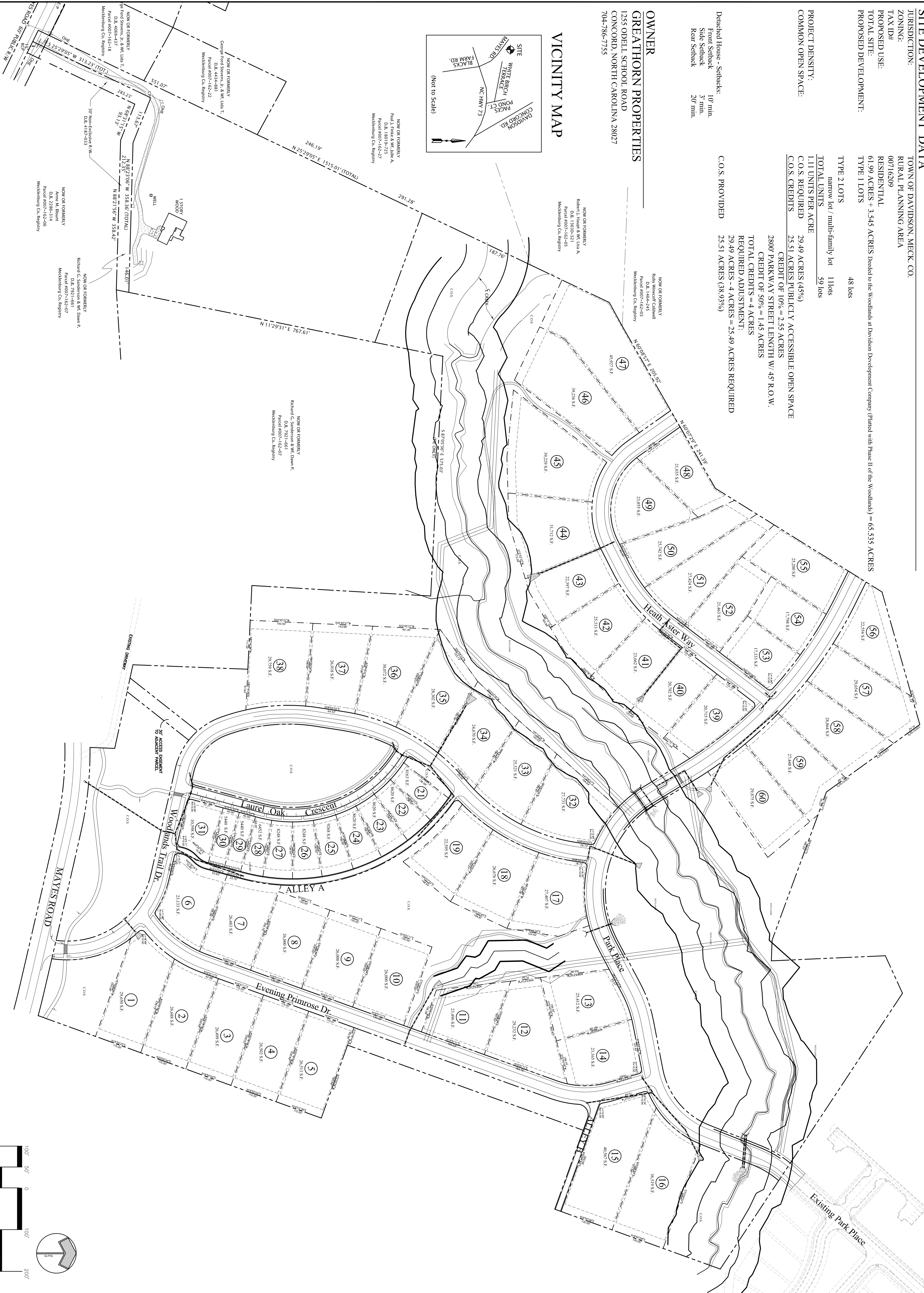
PROJECT DENSITY:
 COMMON OPEN SPACE: 29.49 ACRES (45%)
 1.11 UNITS PER ACRE 59 lots
 C.O.S. REQUIRED 25.51 ACRES PUBLICLY ACCESSIBLE OPEN SPACE
 C.O.S. CREDITS 25.51 ACRES PUBLICLY ACCESSIBLE OPEN SPACE

Detached House - Setbacks:
 Front Setback 10' min.
 Side Setback 5' min.
 Rear Setback 20' min.
 C.O.S. PROVIDED 25.51 ACRES (38.93%)

OWNER
GREATHORN PROPERTIES
 1255 ODELL SCHOOL ROAD
 CONCORD, NORTH CAROLINA 28027
 704-786-7755



VICINITY MAP



LAWRENCE GROUP
 Austin, Carolina, Denver, New York, St. Louis
 Office: 108 S. Main Street
 Davidson, NC 28008
 T: 704.844.1700
 F: 704.844.1700

Professional Seal

The Professional Architect's seal affixed to this sheet applies only to the material and items shown on this sheet. It does not constitute a guarantee, warranty, or endorsement of the quality or accuracy of the information or drawings shown hereon, nor does it constitute an assumption of responsibility for such information or drawings or documents not enclosed with this sheet.

MASTER PLAN AMENDMENT
The Woodlands
 DAVIDSON, NORTH CAROLINA

This drawing and details on it are the sole property of the architect and may be used for this specific project only. It shall not be used for any other project, in whole or in part, or for any other purpose or project, without the written consent of the architect.

No.	Revision Description	Date

Sheet Title: **SITE PLAN**
 Project Number: 13812101
 Drawn By: AH
 Issue Date: October 7, 2013
 Sheet Number: **SP-1**